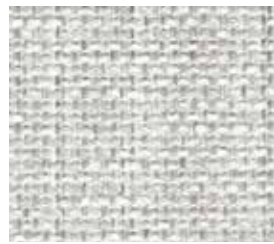


Contract

Colour

Book

crevin



Drom-Fr N° 50



Sublim-Fr N° 01



Ito-Fr N° 51



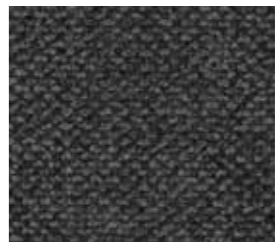
Sublim-Fr N° 07



Sublim-Fr N° 50



Moulin-Fr N° 50



Velvety-Fr N° 53



Moulin-Fr N° 51



Libra-Fr N° 07



Drom-Fr N° 04



Moss N° 51



Sublim-Fr N° 52



Moss N° 53



Velvety-Fr N° 51



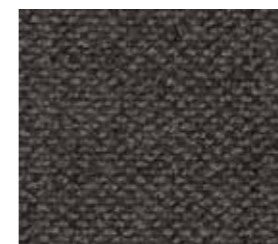
Sorra-Fr N° 51



Libra-Fr N° 50



Granit-Fr N° 54



Velvety-Fr N° 52



Granit-Fr N° 52



Ito-Fr N° 53



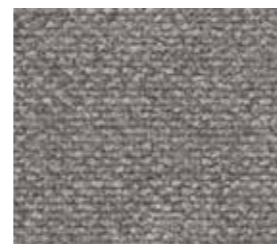
Moulin-Fr N° 54



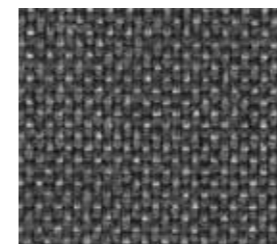
Moss N° 50



Granit-Fr N° 51



Velvety-Fr N° 54



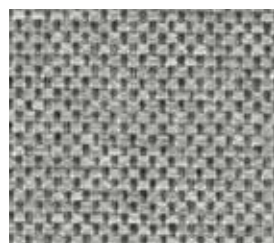
Drom-Fr N° 51



Drom-Fr N° 54



Drom-Fr N° 75



Drom-Fr N° 59



Sorra-Fr N° 54



Libra-Fr N° 51



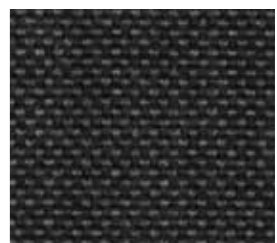
Ito-Fr N° 52



Libra-Fr N° 52



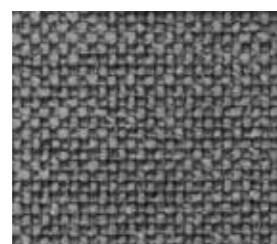
Granit-Fr N° 53



Libra-Fr N° 59



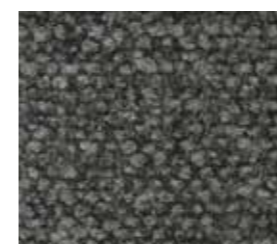
Sorra-Fr N° 52



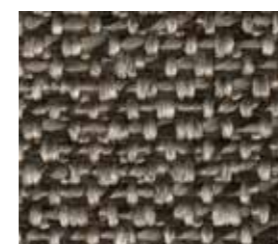
Drom-Fr N° 52



Sublim-Fr N° 54



Sorra-Fr N° 53



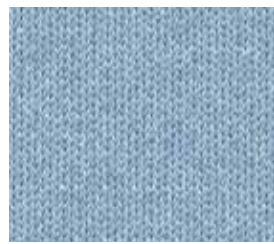
Moulin-Fr N° 52



Libra-Fr N° 53



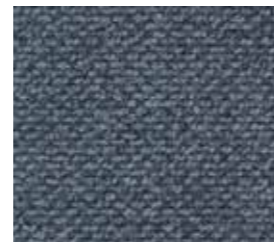
Sublim-Fr N° 53



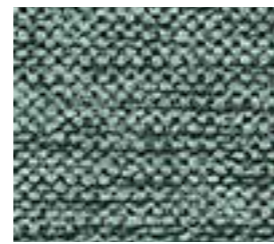
Moss N° 40



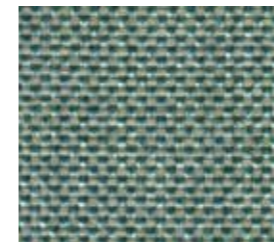
Libra-Fr N° 49



Velvety-Fr N° 49



Sublim-Fr N° 34



Libra-Fr N° 34



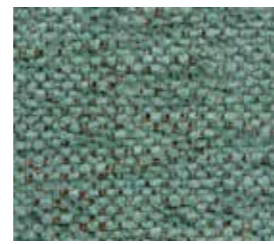
Libra-Fr N° 30



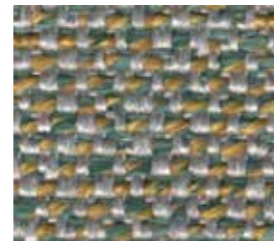
Moss N° 30



Libra-Fr N° 41



Sublim-Fr N° 40



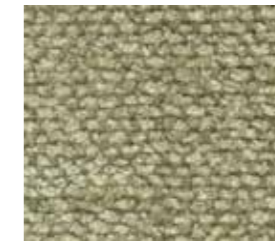
Moulin-Fr N° 33



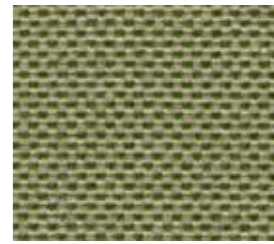
Moss N° 32



Sublim-Fr N° 32



Sorra-Fr N° 39



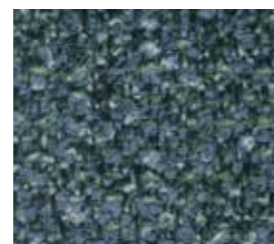
Libra-Fr N° 39



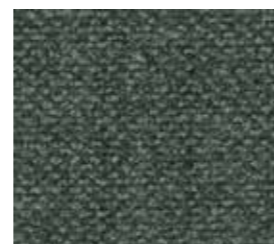
Sublim-Fr N° 43



Moss N° 46



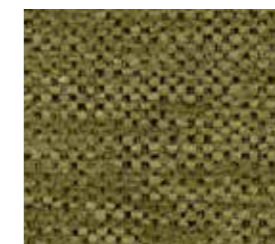
Granit-Fr N° 45



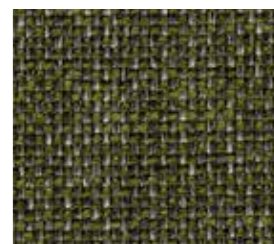
Velvety-Fr N° 33



Moulin-Fr N° 38



Sublim-Fr N° 30



Drom-Fr N° 31



Ito-Fr N° 45



Moss N° 42



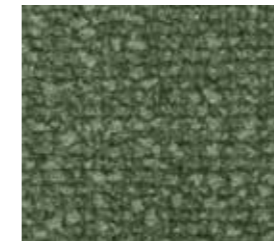
Velvety-Fr N° 45



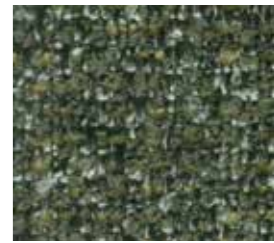
Libra-Fr N° 40



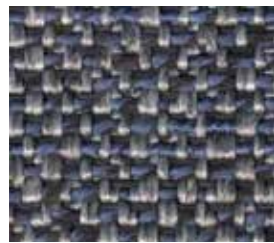
Moss N° 38



Sorra-Fr N° 32



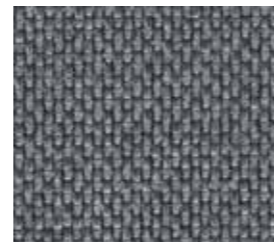
Granit-Fr N° 32



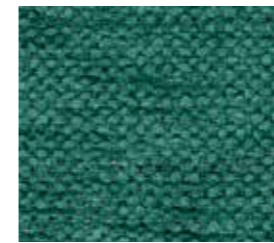
Moulin-Fr N° 47



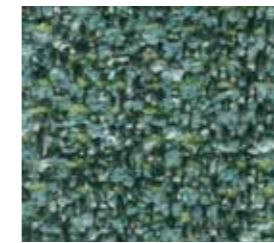
Drom-Fr N° 43



Drom-Fr N° 40



Sublim-Fr N° 33



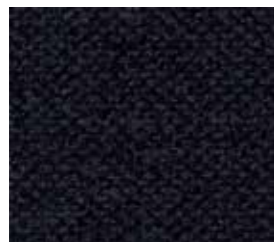
Granit-Fr N° 33



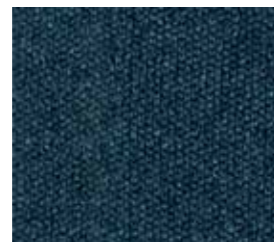
Ito-Fr N° 38



Drom-Fr N° 30



Velvety-Fr N° 47



Moss N° 45



Velvety-Fr N° 43



Sorra-Fr N° 43



Moss N° 35



Drom-Fr N° 34



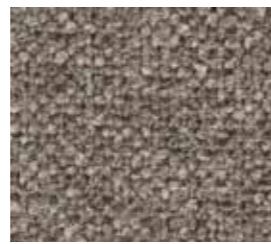
Velvety-Fr N° 35



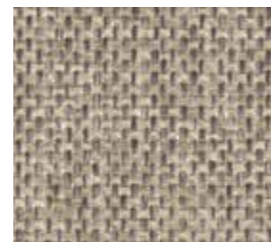
Velvety-Fr N° 38



Velvety-Fr N° 11



Ito-Fr N° 18



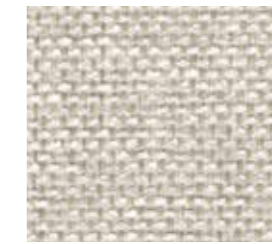
Drom-Fr N° 13



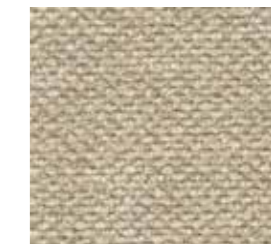
Sublim-Fr N° 05



Granit-Fr N° 01



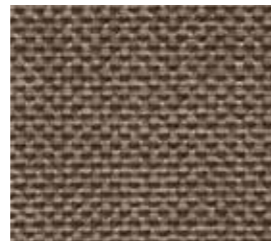
Drom-Fr N° 02



Velvety-Fr N° 05



Sorra-Fr N° 18



Libra-Fr N° 11



Sublim-Fr N° 13



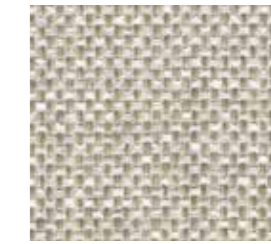
Drom-Fr N° 09



Sublim-Fr N° 02



Sorra-Fr N° 05



Drom-Fr N° 06



Libra-Fr N° 18



Sublim-Fr N° 75



Granit-Fr N° 08



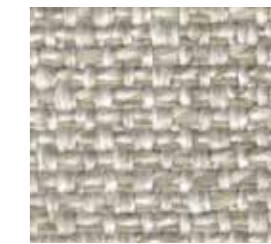
Drom-Fr N° 10



Velvety-Fr N° 10



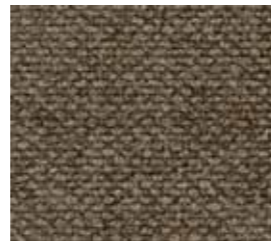
Sorra-Fr N° 07



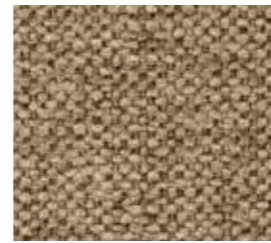
Moulin-Fr N° 05



Drom-Fr N° 15



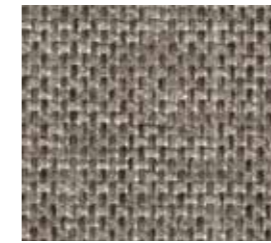
Velvety-Fr N° 18



Sublim-Fr N° 11



Granit-Fr N° 07



Drom-Fr N° 11



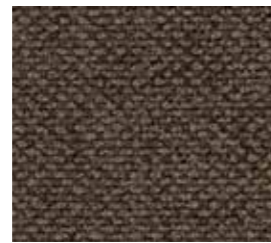
Velvety-Fr N° 07



Libra-Fr N° 05



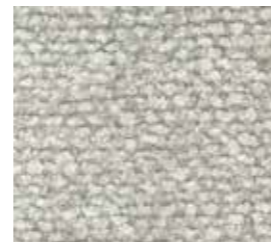
Granit-Fr N° 12



Velvety-Fr N° 12



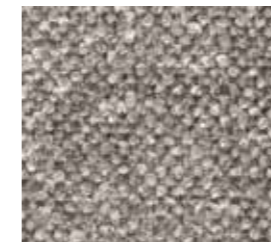
Moulin-Fr N° 10



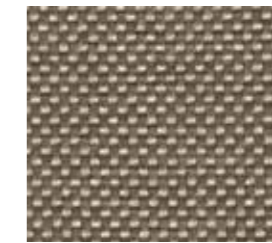
Sorra-Fr N° 11



Velvety-Fr N° 08



Ito-Fr N° 11



Libra-Fr N° 10



Ito-Fr N° 05



Moss N° 14



Sublim-Fr N° 12



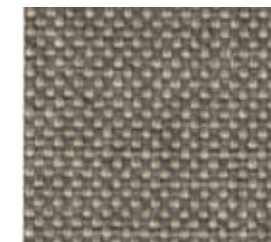
Sorra-Fr N° 08



Moss N° 11



Moulin-Fr N° 07



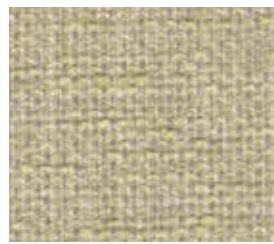
Libra-Fr N° 08



Granit-Fr N° 05



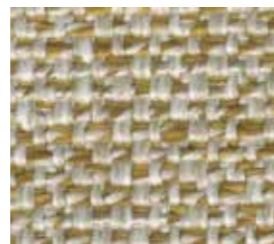
Moss N° 07



Drom-Fr N° 19



Velvety-Fr N° 20



Moulin-Fr N° 20



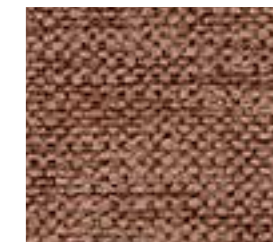
Sorra-Fr N° 71



Ito-Fr N° 71



Drom-Fr N° 71



Sublim-Fr N° 71



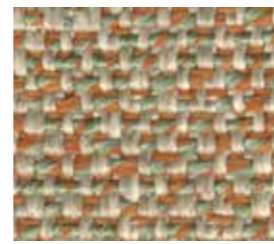
Sorra-Fr N° 19



Sublim-Fr N° 19



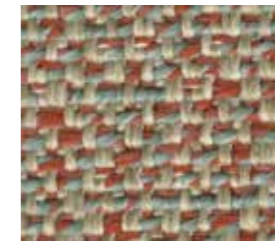
Libra-Fr N° 20



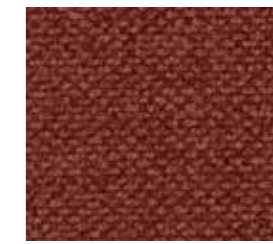
Moulin-Fr N° 26



Moss N° 61



Moulin-Fr N° 62



Velvety-Fr N° 62



Moss N° 16



Sublim-Fr N° 16



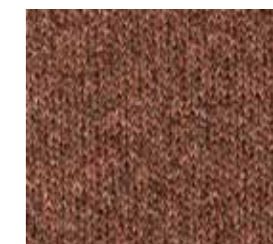
Libra-Fr N° 23



Velvety-Fr N° 71



Drom-Fr N° 62



Moss N° 60



Ito-Fr N° 20



Drom-Fr N° 16



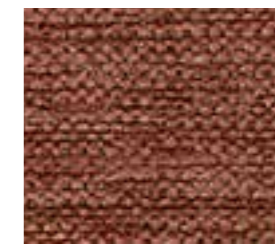
Sorra-Fr N° 26



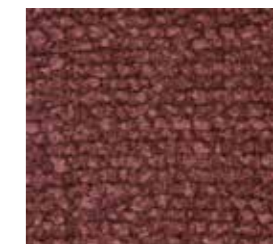
Granit-Fr N° 21



Libra-Fr N° 22



Sublim-Fr N° 62



Sorra-Fr N° 64



Moss N° 20



Sublim-Fr N° 26



Moss N° 24



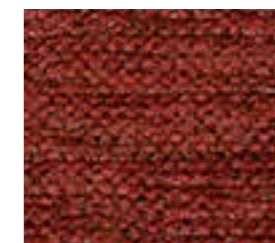
Granit-Fr N° 26



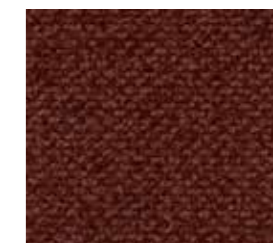
Velvety-Fr N° 21



Ito-Fr N° 21



Sublim-Fr N° 64



Velvety-Fr N° 22



Velvety-Fr N° 26



Drom-Fr N° 26



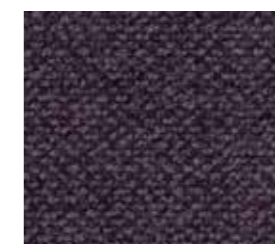
Moss N° 21



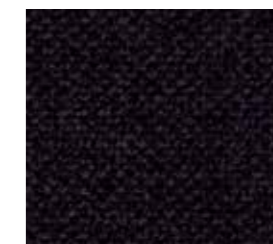
Drom-Fr N° 27



Moss N° 65



Velvety-Fr N° 44



Velvety-Fr N° 63

Crevin links the mindful and sustainability-conscious designer to a distinct contemporary aesthetic based on homely design, performance and artisanal mastery. Thanks to their double woven structure, Crevin contract fabrics are made flame retardant by incorporating Fr-yarn into the base fabric, without applying environmentally harmful chemicals or back-coatings.

Drom  
 Granit  
 Libra  
 Moss  
 Ito  
 Moulin  
 Sorra  
 Sublim  
 Velvety



All fabrics are available in both Fr and non-Fr, and come with the quality seal **PERFORMANCE+**, enabling the easy removal of soils and stains with a solution of water and neutral soap.

### Libra-Fr

Libra is made out of polypropylene microfibre, giving soft touch, apart from great wear and fade resistance.

| General Information   | Specifications   | Care  |
|---|--|---|
| <p><b>Composition</b><br/>49%PP 21%MA 16%CO REC 14%PES REC</p> <p><b>Width</b><br/>140 + 4cm</p> <p><b>Weight</b><br/>450 gr/m2 ± 5 %<br/>630 gr/lm ± 5 %</p>   | <p><b>Abrasion resistance (End point)</b><br/>66.000 EN ISO 12947-2:1998</p> <p><b>Pilling resistance</b><br/>4-5 EN ISO 12945/2:2000</p> <p><b>Lightfastness</b><br/>&gt;6 EN ISO 105-B02:1998<br/>and 105 B02/A01:2002</p>   | <p><b>PERFORMANCE+</b><br/>Easy to clean, longlasting fabrics</p> <p><b>Washing conditions</b><br/> </p> <p><b>Dimensional change domestic washing and drying (%)</b><br/>           Warp: -1<br/>           Weft: -1<br/>           EN ISO 3759:2008, EN ISO 6330:2000<br/>           and EN ISO 5077:2008</p> |
| <p><b>Sustainability</b></p> <ul style="list-style-type: none"> <li>• Life Cycle assessment data available.</li> <li>• Double-woven with recycled fibre.</li> <li>• In-house, closed-loop recycling of textile waste.</li> <li>• In-house, circular water recycling.</li> <li>• 100% electricity from renewable sources.</li> </ul> | <p><b>Ignitability*</b></p> <p>BS5852 Source 0    NFPA 260:2013<br/>           BS5852 Source 1    BS 7176 Low Hazard<br/>           EN1021-Part 1:2006    UNI 9175 Clase 3IM<br/>           EN1021-Part 2:2006    IMO Anexo 1 Parte 8<br/>           CAL TB 117:2013</p> |   |
| <p>OEKO-TEX® CONFIDENCE IN TEXTILES STANDARD 100 20200K0217 AITEX</p> <p> </p>  |  |   |

\*This fabric is also available in non Fr. Send your inquiry to: crevin@crevin.com



## Granit-Fr

Made out of 80% recycled materials, Granit pays tribute to timeless craft while setting new standards in sustainability.

| General Information   | Specifications   | Care   |
|---|--|--|
| <p><b>Composition</b><br/>47%PES REC 24%PP REC 10%PES 10%MA 9%CO REC</p> <p><b>Width</b><br/>140 + 4cm</p> <p><b>Weight</b><br/>590 gr/m2 ± 5 % / 826 gr/lm ± 5 %</p>   | <p><b>Abrasion resistance (End point)</b><br/>50.000 EN ISO 12947-2:1998</p> <p><b>Pilling resistance</b><br/>4-5 EN ISO 12945/2:2000</p> <p><b>Lightfastness</b><br/>5-6 EN ISO 105-B02:1998 and 105 B02/A01:2002</p> | <p><b>PERFORMANCE+</b><br/>Easy to clean, longlasting fabrics</p> <p><b>Washing conditions</b></p> <p> </p> <p><b>Dimensional change domestic washing and drying (%)</b><br/>Warp: -3<br/>Weft: -3<br/>EN ISO 3759:2008, EN ISO 6330:2000 and EN ISO 5077:2008</p> |
| <p><b>Sustainability</b></p> <ul style="list-style-type: none"> <li>Life Cycle assessment data available.</li> <li>Double-woven with recycled fibre.</li> <li>In-house, closed-loop recycling of textile waste.</li> <li>In-house, circular water recycling.</li> <li>100% electricity from renewable sources.</li> </ul> | <p><b>Ignitability*</b></p> <p>BS5852 Source 0    NFPA 260:2013<br/>BS5852 Source 1    BS 7176 Low Hazard<br/>EN1021-Part 1:2006    UNI 9175 Clase 3IM<br/>EN1021-Part 2:2006<br/>CAL TB 117:2013</p>                  |  |



\*This fabric is also available in non Fr. Send your inquiry to: crevin@crevin.com

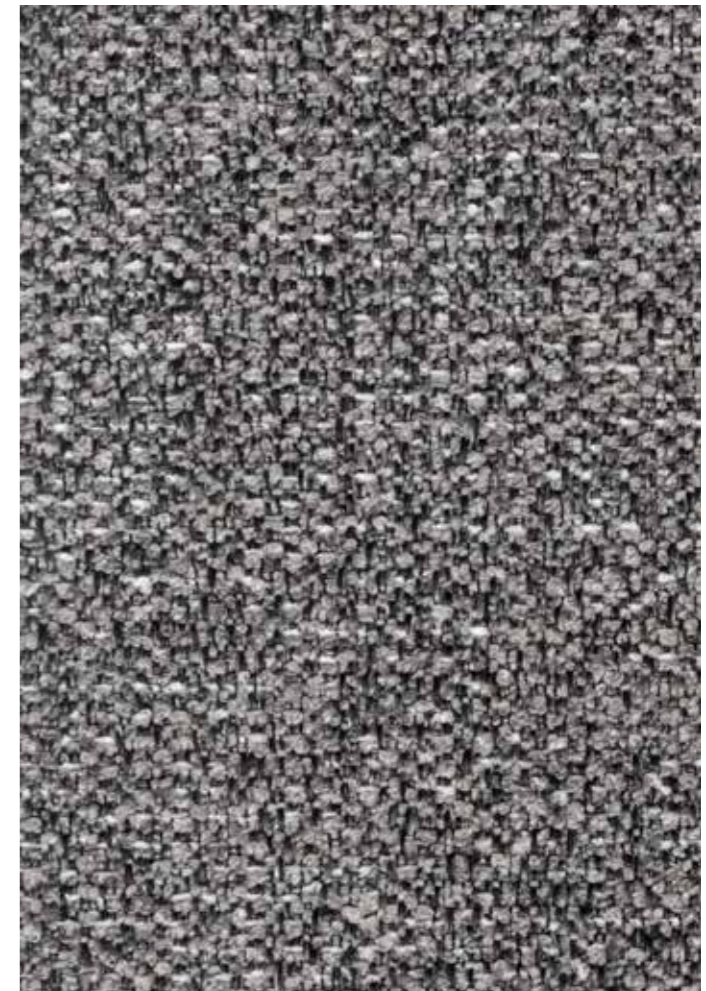
## Drom-Fr

Using a low-pile chenille tightly interwoven into a dense weave, Drom reminds of natural canvas in rich linen tones.

| General Information   | Specifications   | Care   |
|---|--|--|
| <p><b>Composition</b><br/>34%PES 23%PP 17%MA 13%CO REC 13%PES REC</p> <p><b>Width</b><br/>140 + 4cm</p> <p><b>Weight</b><br/>479 gr/m2 ± 5 % / 670 gr/lm ± 5 %</p>  | <p><b>Abrasion resistance (End point)</b><br/>50.000 EN ISO 12947-2:1998</p> <p><b>Pilling resistance</b><br/>4-5 EN ISO 12945/2:2000</p> <p><b>Lightfastness</b><br/>6-7 EN ISO 105-B02:1998 and 105 B02/A01:2002</p>       | <p><b>PERFORMANCE+</b><br/>Easy to clean, longlasting fabrics</p> <p><b>Washing conditions</b></p> <p> </p> <p><b>Dimensional change domestic washing and drying (%)</b><br/>Warp: -2<br/>Weft: -1,5<br/>EN ISO 3759:2008, EN ISO 6330:2000 and EN ISO 5077:2008</p> |
| <p><b>Sustainability</b></p> <ul style="list-style-type: none"> <li>Life Cycle assessment data available.</li> <li>Double-woven with recycled fibre.</li> <li>In-house, closed-loop recycling of textile waste.</li> <li>In-house, circular water recycling.</li> <li>100% electricity from renewable sources.</li> </ul> | <p><b>Ignitability*</b></p> <p>BS5852 Source 0    NFPA 260:2013<br/>BS5852 Source 1    BS 7176 Low Hazard<br/>EN1021-Part 1:2006    UNI 9175 Clase 3IM<br/>EN1021-Part 2:2006    IMO Anexo 1 Parte 8<br/>CAL TB 117:2013</p> |  |




\*This fabric is also available in non Fr. Send your inquiry to: crevin@crevin.com





## Ito-Fr

A dense and wealthy weave highlights Ito's yarn, revealing rich earthy shades from light to dim in a subtle surface texture.


| General Information  | Specifications  | Care   |
|--|---|--|
| <b>Composition</b><br>49%PES 17%PP 13%MA 11%CO REC<br>10%PES REC<br><br><b>Width</b><br>140 + 4cm<br><br><b>Weight</b><br>618 gr/m2 ± 5 % / 865 gr/lm ± 5 %  | <b>Abrasion resistance (End point)</b><br>>100.000 EN ISO 12947-2:1998<br><br><b>Pilling resistance</b><br>4-5 EN ISO 12945/2:2000<br><br><b>Lightfastness</b><br>5-6 EN ISO 105-B02:1998<br>and 105 B02/A01:2002 | <b>PERFORMANCE+</b><br>Easy to clean, longlasting fabrics<br><br><b>Washing conditions</b><br><br><br><b>Dimensional change domestic washing and drying (%)</b><br>Warp: -2,4<br>Weft: -2,6<br>EN ISO 3759:2008, EN ISO 6330:2000<br>and EN ISO 5077:2008 |
| <b>Sustainability</b> <ul style="list-style-type: none"> <li>Life Cycle assessment data available.</li> <li>Double-woven with recycled fibre.</li> <li>In-house, closed-loop recycling of textile waste.</li> <li>In-house, circular water recycling.</li> <li>100% electricity from renewable sources.</li> </ul> | <b>Ignitability*</b><br><br>BS5852 Source 0    NFPA 260:2013<br>BS5852 Source 1    BS 7176 Low Hazard<br>EN1021-Part 1:2006    UNI 9175 Clase 3IM<br>EN1021-Part 2:2006<br>CAL TB 117:2013                        |  |



\*This fabric is also available in non Fr. Send your inquiry to: crevin@crevin.com

## Moss

Moss is a knitted, stretchable fabric that resembles felt wool. Its special melange yarn accounts for deep, warm shades.

| General Information  | Specifications   | Care   |
|--|--|--|
| <b>Composition</b><br>100%PES FR<br><br><b>Width</b><br>140 + 4cm<br><br><b>Weight</b><br>488 gr/m2 ± 5 %<br>707 gr/lm ± 5 %   | <b>Abrasion resistance (End point)</b><br>50.000 EN ISO 12947-2:1998<br><br><b>Pilling resistance</b><br>4-5 EN ISO 12945/2:2000<br><br><b>Lightfastness</b><br>6-7 EN ISO 105-B02:1998<br>and 105 B02/A01:2002  | <b>Washing conditions</b><br><br><br><b>Dimensional change domestic washing and drying (%)</b><br>Warp: -3<br>Weft: +1,5<br>EN ISO 3759:2008, EN ISO 6330:2000<br>and EN ISO 5077:2008 |
| <b>Sustainability</b> <ul style="list-style-type: none"> <li>Life Cycle assessment data available.</li> <li>Double-woven with recycled fibre.</li> <li>In-house, closed-loop recycling of textile waste.</li> <li>In-house, circular water recycling.</li> <li>100% electricity from renewable sources.</li> </ul> | <b>Ignitability*</b><br><br>BS5852 Source 0/1**    IMO Annex 1 Part 8<br>EN1021-Part 1/2:2006    NF D 60 013<br>CAL TB 117:2013    NF P92-507-M1<br>NFPA 260:2013    DIN 4102 B2<br>BS 7176 Low Hazard    EN ISO 354 (Acoustic)<br>UNI 9175 Clase 3IM**    **FR Foam |  |



\*This fabric is also available in non Fr. Send your inquiry to: crevin@crevin.com







## Sorra-Fr

Sorra is the return to old-school craftsmanship. The grainy texture of a custom yarn brings the flair of artisanal quality.

| General Information   | Specifications   | Care   |
|---|--|--|
| <p><b>Composition</b><br/>59%PES 21%PES REC 11%MA 9%CO REC</p> <p><b>Width</b><br/>140 + 4cm</p> <p><b>Weight</b><br/>640 gr/m2 ± 5 %<br/>896 gr/lm ± 5 %</p>   | <p><b>Abrasion resistance (End point)</b><br/>80.000 EN ISO 12947-2:1998</p> <p><b>Pilling resistance</b><br/>4-5 EN ISO 12945/2:2000</p> <p><b>Lightfastness</b><br/>5-6 EN ISO 105-B02:1998<br/>and 105 B02/A01:2002</p> | <p><b>PERFORMANCE+</b><br/>Easy to clean, longlasting fabrics</p> <p><b>Washing conditions</b></p> <p> </p> <p><b>Dimensional change domestic washing and drying (%)</b><br/>Warp: -1<br/>Weft: -1<br/>EN ISO 3759:2008, EN ISO 6330:2000<br/>and EN ISO 5077:2008</p> |
| <p><b>Sustainability</b></p> <ul style="list-style-type: none"> <li>Life Cycle assessment data available.</li> <li>Double-woven with recycled fibre.</li> <li>In-house, closed-loop recycling of textile waste.</li> <li>In-house, circular water recycling.</li> <li>100% electricity from renewable sources.</li> </ul> | <p><b>Ignitability*</b></p> <p>BS5852 Source 0    NFPA 260:2013<br/>BS5852 Source 1    BS 7176 Low Hazard<br/>EN1021-Part 1:2006    UNI 9175 Clase 3IM<br/>EN1021-Part 2:2006<br/>CAL TB 117:2013</p>                      |  |
| <p> </p>  |  |  |

\*This fabric is also available in non Fr. Send your inquiry to: crevin@crevin.com

## Moulin-Fr

Composed of distinctly coloured yarns, Moulin creates shades that embrace each other in rustic, earthy textures.

| General Information   | Specifications   | Care   |
|---|--|--|
| <p><b>Composition</b><br/>77%PP 10%PES REC 7%MA 6%CO REC</p> <p><b>Width</b><br/>140 + 4cm</p> <p><b>Weight</b><br/>568 gr/m2 ± 5 %<br/>795 gr/lm ± 5 %</p>   | <p><b>Abrasion resistance (End point)</b><br/>80.000 EN ISO 12947-2:1998</p> <p><b>Pilling resistance</b><br/>4-5 EN ISO 12945/2:2000</p> <p><b>Lightfastness</b><br/>&gt;6 EN ISO 105-B02:1998<br/>and 105 B02/A01:2002</p> | <p><b>PERFORMANCE+</b><br/>Easy to clean, longlasting fabrics</p> <p><b>Washing conditions</b></p> <p> </p> <p><b>Dimensional change domestic washing and drying (%)</b><br/>Warp: -3<br/>Weft: -2<br/>EN ISO 3759:2008, EN ISO 6330:2000<br/>and EN ISO 5077:2008</p> |
| <p><b>Sustainability</b></p> <ul style="list-style-type: none"> <li>Life Cycle assessment data available.</li> <li>Double-woven with recycled fibre.</li> <li>In-house, closed-loop recycling of textile waste.</li> <li>In-house, circular water recycling.</li> <li>100% electricity from renewable sources.</li> </ul> | <p><b>Ignitability*</b></p> <p>BS5852 Source 0    NFPA 260:2013<br/>BS5852 Source 1    BS 7176 Low Hazard<br/>EN1021-Part 1:2006    UNI 9175 Clase 3IM<br/>EN1021-Part 2:2006<br/>CAL TB 117:2013</p>                        |  |
| <p> </p>  |  |  |



\*This fabric is also available in non Fr. Send your inquiry to: crevin@crevin.com





## Velvety-Fr



Velvety is a piece-dyed velvet lookalike with an extraordinary performance, available in a wide variety of colours.

| General Information  | Specifications   | Care   |               |                 |                    |                    |                    |                    |                     |                 |  |  |
|--|--|--|---------------|-----------------|--------------------|--------------------|--------------------|--------------------|---------------------|-----------------|--|--|
| <b>Composition</b><br>74%PES 12%PES REC 7%CO REC 7%MA<br><br><b>Width</b><br>140 + 4cm<br><br><b>Weight</b><br>571 gr/m2 ± 5 %<br>800 gr/lm ± 5 %  | <b>Abrasion resistance (End point)</b><br>200.000 EN ISO 12947-2:1998<br><br><b>Pilling resistance</b><br>5 EN ISO 12945/2:2000<br><br><b>Lightfastness</b><br>5-6 EN ISO 105-B02:1998<br>and 105 B02/A01:2002   | <b>PERFORMANCE+</b><br>Easy to clean, longlasting fabrics<br><br><b>Washing conditions</b><br><br><br><b>Dimensional change domestic washing and drying (%)</b><br>Warp: -1,6<br>Weft: -2<br>EN ISO 3759:2008, EN ISO 6330:2000<br>and EN ISO 5077:2008 |               |                 |                    |                    |                    |                    |                     |                 |  |  |
| <b>Sustainability</b> <ul style="list-style-type: none"> <li>• Life Cycle assessment data available.</li> <li>• Double-woven with recycled fibre.</li> <li>• In-house, closed-loop recycling of textile waste.</li> <li>• In-house, circular water recycling.</li> <li>• 100% electricity from renewable sources.</li> </ul> | <b>Ignitability*</b> <table border="0"> <tr> <td>BS5852 Source 0</td> <td>NFPA 260:2013</td> </tr> <tr> <td>BS5852 Source 1</td> <td>BS 7176 Low Hazard</td> </tr> <tr> <td>EN1021-Part 1:2006</td> <td>UNI 9175 Clase 3IM</td> </tr> <tr> <td>EN1021-Part 2:2006</td> <td>IMO Anexo 1 Parte 8</td> </tr> <tr> <td>CAL TB 117:2013</td> <td></td> </tr> </table> | BS5852 Source 0  | NFPA 260:2013 | BS5852 Source 1 | BS 7176 Low Hazard | EN1021-Part 1:2006 | UNI 9175 Clase 3IM | EN1021-Part 2:2006 | IMO Anexo 1 Parte 8 | CAL TB 117:2013 |  |  |
| BS5852 Source 0  | NFPA 260:2013  |  |               |                 |                    |                    |                    |                    |                     |                 |  |  |
| BS5852 Source 1  | BS 7176 Low Hazard   |  |               |                 |                    |                    |                    |                    |                     |                 |  |  |
| EN1021-Part 1:2006   | UNI 9175 Clase 3IM   |  |               |                 |                    |                    |                    |                    |                     |                 |  |  |
| EN1021-Part 2:2006   | IMO Anexo 1 Parte 8  |  |               |                 |                    |                    |                    |                    |                     |                 |  |  |
| CAL TB 117:2013  |  |  |               |                 |                    |                    |                    |                    |                     |                 |  |  |
|   |  |  |               |                 |                    |                    |                    |                    |                     |                 |  |  |

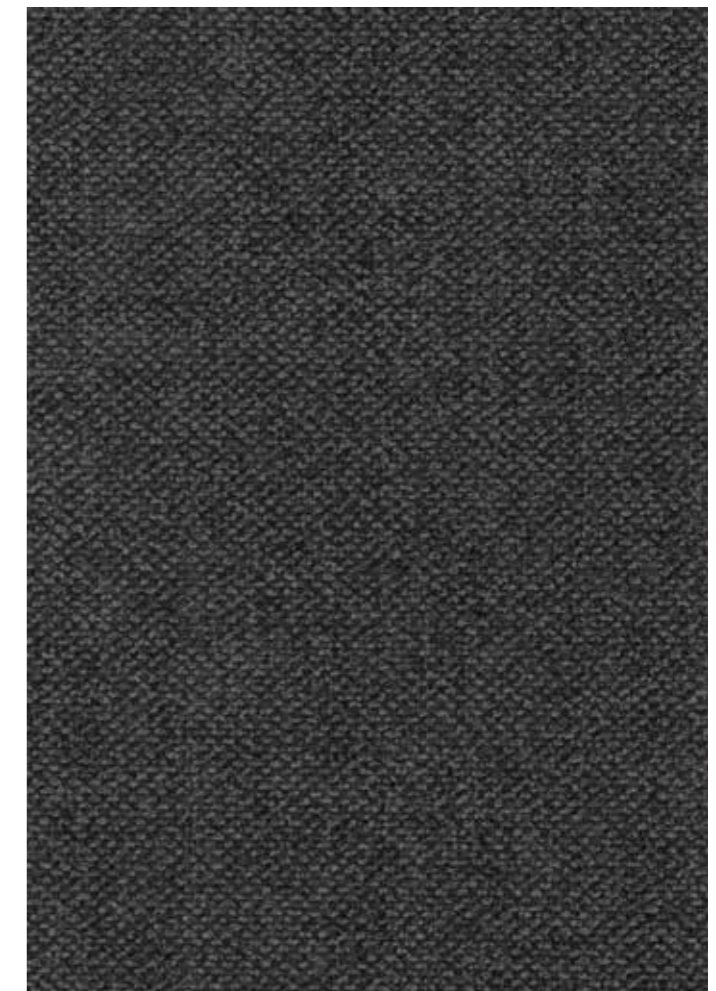
\*This fabric is also available in non Fr. Send your inquiry to: crevin@crevin.com

## Sublim-Fr

Sublim is a high-performing basic with a subtle jacquard pattern, presented in a range of 26 colours.

| General Information  | Specifications  | Care  |               |                 |                    |                    |                    |                    |                    |                 |  |  |
|--|---|---|---------------|-----------------|--------------------|--------------------|--------------------|--------------------|--------------------|-----------------|--|--|
| <b>Composition</b><br>78%PES 12%MA 10%CO REC<br><br><b>Width</b><br>140 + 4cm<br><br><b>Weight</b><br>432 gr/m2 ± 5 %<br>605 gr/lm ± 5 %   | <b>Abrasion resistance (End point)</b><br>80.000 EN ISO 12947-2:1998<br><br><b>Pilling resistance</b><br>5 EN ISO 12945/2:2000<br><br><b>Lightfastness</b><br>5-6 EN ISO 105-B02:1998<br>and 105 B02/A01:2002   | <b>PERFORMANCE+</b><br>Easy to clean, longlasting fabrics<br><br><b>Washing conditions</b><br><br><br><b>Dimensional change domestic washing and drying (%)</b><br>Warp: -2<br>Weft: -3<br>EN ISO 3759:2008, EN ISO 6330:2000<br>and EN ISO 5077:2008 |               |                 |                    |                    |                    |                    |                    |                 |  |  |
| <b>Sustainability</b> <ul style="list-style-type: none"> <li>• Life Cycle assessment data available.</li> <li>• Double-woven with recycled fibre.</li> <li>• In-house, closed-loop recycling of textile waste.</li> <li>• In-house, circular water recycling.</li> <li>• 100% electricity from renewable sources.</li> </ul> | <b>Ignitability*</b> <table border="0"> <tr> <td>BS5852 Source 0</td> <td>NFPA 260:2013</td> </tr> <tr> <td>BS5852 Source 1</td> <td>BS 7176 Low Hazard</td> </tr> <tr> <td>EN1021-Part 1:2006</td> <td>UNI 9175 Clase 3IM</td> </tr> <tr> <td>EN1021-Part 2:2006</td> <td>IMO Annex 1 Part 8</td> </tr> <tr> <td>CAL TB 117:2013</td> <td></td> </tr> </table> | BS5852 Source 0   | NFPA 260:2013 | BS5852 Source 1 | BS 7176 Low Hazard | EN1021-Part 1:2006 | UNI 9175 Clase 3IM | EN1021-Part 2:2006 | IMO Annex 1 Part 8 | CAL TB 117:2013 |  |  |
| BS5852 Source 0  | NFPA 260:2013   |   |               |                 |                    |                    |                    |                    |                    |                 |  |  |
| BS5852 Source 1  | BS 7176 Low Hazard  |   |               |                 |                    |                    |                    |                    |                    |                 |  |  |
| EN1021-Part 1:2006   | UNI 9175 Clase 3IM  |   |               |                 |                    |                    |                    |                    |                    |                 |  |  |
| EN1021-Part 2:2006   | IMO Annex 1 Part 8  |   |               |                 |                    |                    |                    |                    |                    |                 |  |  |
| CAL TB 117:2013  |   |   |               |                 |                    |                    |                    |                    |                    |                 |  |  |
|    |   |   |               |                 |                    |                    |                    |                    |                    |                 |  |  |

\*This fabric is also available in non Fr. Send your inquiry to: crevin@crevin.com



Designed

and

Crafted

We design, we weave, we dye, we finish.  
In short, we create. Our expertise  
comes from understanding every  
aspect of fabrics.

We are born and bred in Terrassa,  
a small town close to Barcelona and  
home to innovative textile production  
since the late 19<sup>th</sup> century.

It continues to be a place of respect  
for tradition, people and excellence in  
cultivating sustainable technologies.

[www.crevin.com](http://www.crevin.com)

in Terrassa

**crevin**

(Barcelona)