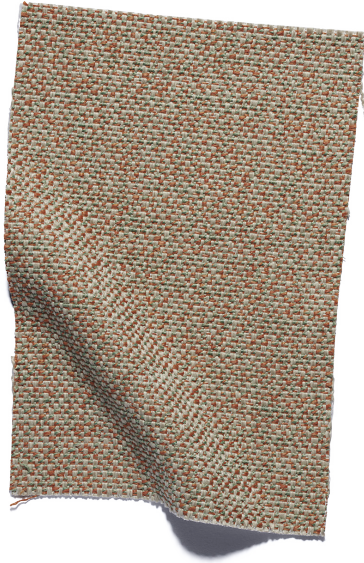


5 years guarantee

General Information



Composition

80%PP 14%PES REC 3%CO REC
3%OF REC

Width

140 + 4cm

Weight

550 gr/m² ± 5 %
770 gr/lm ± 5 %

Custom code

UE: 5407.83.00
USA: 5407.83.00.90

Laboratory test number

IN-00825-2020-2 / 2024RA1608

Specifications

Seam slippage resistance (mm)

Warp: 2,50
Weft: 2,00
EN ISO 13936/2:2004

Abrasion resistance (End point)

80.000 EN ISO 12947-2016

Pilling resistance

4-5 EN ISO 12945/2:2000

Lightfastness

>6 EN ISO 105-B02:1998
and 105 B02/A01:2002

Colour fastness to rubbing

Dry: 4-5
Wet: 4-5
EN ISO 105-X12:2002

Notes:

Variations in weave, shading, slubs,
and texture give this fabric its unique
personality and form part of its design.

Care

PERFORMANCE+

Easy to clean, longlasting fabrics

Washing conditions



Soiling and cleanability

4-5 FORD FLTM BN 112-08:2005

Dimensional change domestic

washing and drying (%)

Warp: -3

Weft: -2

EN ISO 3759:2008, EN ISO 6330:2000
and EN ISO 5077:2008

When confectioning or washing the sofa cover with
velcro please attach a protective cloth.

Ignitability

BS5852 Source 0
EN1021-Part 1:2006
CAL TB 117:2013
NFPA 260:2013

Upon Request:
BS5852 Source 1
EN1021-Part 2:2006
BS 7176 Low Hazard
UNI 9175 Clase 3IM

Environmental considerations



14% GRS recycled PET bottles
3% Circular yarn from own waste
3% Recycled CO
80% Low impact yarn (PP)

Life cycle analysis

Cradle to gate assessment. From raw
material extraction to finished fabric:
resources, yarn production and
dyeing, fabric weaving and finishing,
waste recycling.

Carbon footprint

3,45 kg CO₂ eq / m
1,71% less since 2020

Water consumption

60,48 liters / m
0,46% less since 2020



UNIVERSITAT POLITÈCNICA DE CATALUNYA
BARCELONATECH

Escola Superior d'Enginyeries Industrial,
Aeroespacial i Audiovisual de Terrassa

Study realized in collaboration with UPC

Methodology:
Life Cycle Analysis. ISO 14040 standard.

Functional unit:
1 linear meters, 140 cm width.

Database:
Own data, Ecoinvent 3.6 database and
published data.

Calculation methodology:
Aware V1.02
ReCiPe Midpoint (H) 2016 v1.04
ReCiPe Endpoint (H) 2016 v1.04
IPCC 2013 GWP 100a v1.03
Software: SimaPro 9.4.01

Designed and Crafted
in Terrassa (Barcelona)

